



Tooele Valley Gardening Association

The Tooele Valley Gardening Association exists to promote the love of all things of gardening through education, service, and community.

Upcoming Events

February

USU Extension Tooele Master Gardener Spring Expo 2026
Sat., Feb. 28th
9:30 a.m.
151 N Main St
Tooele

March

Onion Growing Class and Exchange
Mar 14th
10 am - 11:30 am
Adobe Red Rock Products
700 E Village Blvd
Stansbury Park

USU's Fruit Tree Pruning Demonstration

Mar 21st
1:00 - 3:00 PM
1894 Blue Peak Drive
in Pine Canyon

April

Monthly Gardening Class Seed Starting

Apr 9th
7:00 p.m.
USU Extension Office
151 N Main St
Tooele

For more details and information check out

LOOKING AHEAD

in this newsletter

or the TVGA Facebook Page



President's Message



Friends,

Did we just have a winter? Maybe I missed it, or maybe the groundhog is saving the best for last. Anyway don't be fooled, it's not time to start planting annuals! It is time to start pruning though, and if your yard is anything like mine, that's a job that carries right into summer.

Remember, trees are happiest if you never take more than **one-third** of their branches in a season. But don't be afraid to shape, rejuvenate, and imagine how you want things to grow. Prune shade trees high while they're young for ease of walking and mowing and to keep sight lines open. Encourage wide canopies by remembering the **10-and-2 Rule**: aim for branches that spread like the hands of a clock. And for help with fruit trees plan to be at the upcoming **pruning demo**.

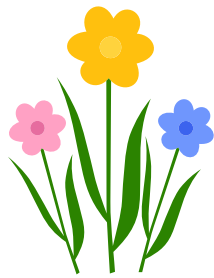
We're excited for the USU Extension's **Spring Expo** where many of our members are presenting and we'll be on hand to help you renew or to join. It's going to be a great season, and in April we kick off our **first monthly education meeting** so we hope to see each other regularly.

Thanks for being part of this community. Here's to a season of thoughtful cuts, healthy growth, and gardens that surprise us in all the best ways.

Warmly,
Tyler Leary



Looking Ahead



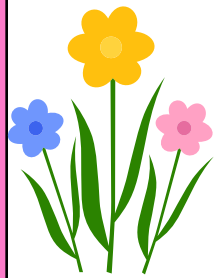
February

USU Extension Tooele Master Gardener Spring Expo 2026

Sat., Feb. 28th, 9:30 a.m.

151 N Main St, Tooele

Admission \$5



March

Onion Growing Class and Exchange

Sat., Mar. 14th

10:00 - 11:30 a.m.

Adobe Red Rock Products

700 E. Village Blvd

Stansbury Park

USU's Fruit Tree Pruning Demonstration

Sat., Mar. 21st

1:00 - 3:00 p.m.

1894 Blue Peak Drive

in Pine Canyon



April

Monthly Gardening Class Seed Starting

Apr. 9th

7 p.m.

USE Extension Office

151 N Main St.

Tooele



May

The Annual Garden Tour

Tickets go on sale

May 22nd

(Annual Garden Tour
June 5th & 6th)

More details to come



**Tooele Valley
Garden Tour**

USU Extension Garden Expo

USU's Garden Expo is HERE! Don't Miss It!

You know it's almost gardening season when the USU Garden Expo is here! The event is at 10 AM on Saturday, February 28th, and doors open at 9:30 AM. The USU Extension is located at 151 N. Main, Tooele.



For only \$5 admission, you can choose from 6 great classes and the keynote session featuring Dr. Miles Becker! His session is "A Toolkit for Tree Survival and Care."

No RSVP necessary, just show up! 151 N. Main. Registration opens at 9:30 AM, and the first session commences at 10 AM.

We'll see YOU there!

USU Expo Set Up Volunteers are NEEDED! Can YOU Help?

The USU Spring Expo is almost here, and the event needs to be set up the day before, on Friday, February 27th, at 10 AM at the USU Extension Office, 151 N. Main, Tooele.

We need to set up chairs, tables, and table cloths, as well as the registration area, and assemble materials packets. Can you help for an hour or so?

Contact Jay Cooper at
dirtfarmerjay@gmail.com or 435-830-1447.

**VOLUNTEERS
NEEDED**



USU Extension

Tooele Master Gardener Spring Expo 2026

Saturday February 28 10:00 a.m.

10:00 a.m.

Small Vegetable Gardening ----- Janet White & Brooke Howland

A Tooele Valley Tree Tour - Great Trees To Grow----- Tyler Leary

11:00 a.m.

Favorite Spring Bulbs ----- Mary Durtschi

Organic Gardening----- Stephania Potter

12:00 p.m.

Growing Roses in Tooele Valley----- Ginny Hooper

Kitchen Magic Tips & Techniques for Great Food Prep ----- Jay Cooper

1:00 p.m.

Guest Speaker: Dr. Miles Becker

Assistant Professor, Extension Urban Forestry Specialist

Toolkit for Tree Survival and Care

Registration 9:30 a.m. - \$5.00

USU Extension Tooele County – 151 North Main Street, Tooele, Ut 84074

435-277-2409



Extension Tooele County
UtahStateUniversity



USU Garden Expo Classes

PRESENTATIONS

Small Vegetable Gardening, by **Jane White and Brooke Howland**. Square foot gardening, container gardening, including vegetables in your flower beds, taught by mother and daughter duo. Janet is a Master Gardener and is a member of the Tooele Valley Garden Association. She loves working in her yard and creating fun living spaces to enjoy and always suggesting structures for her husband to build. Brooke has a Landscape Management degree from BYU and her current job is estate manager. She likes to spend other people's money creating beautiful spaces, including her moms.

A Tooele Valley Tree Tour – Great Trees to Grow by Tyler Leary

Considerations for selecting the right tree to plant. Top 5 local favorites for various purposes, including large shade, smaller ornamental screening and evergreen trees. Info on where to find local mature specimens. Tyler is president of the Tooele Valley Gardening Association and loves trees. He has packed more than a hundred varieties and cultivars in one acre at his home in Lake Point (with varying success).

Favorite Spring Bulbs by Mary Durtschi – Former President of the Tooele Master Gardeners, Mary has grown 26 classes of bulbs and corms. Daffodils are her largest collection. She was the first public daffodil garden in the state and has presented many classes and organized exhibits at Red Butte Gardens and Thanksgiving Point. Mary is currently involved in the Utah Iris Society and the Utah Daylily Club. Her presentation will be about the wide diversity of bulbs from early spring through late spring.

Organic Vegetable Gardening by Stepania Pottter – Stephania has an A.A.S. degree in horticulture, a certificate in Nursery Operation from Washington State University and a Certificate of Organic Gardening from Oregon State University. She is a 15 year Master Gardener from Washington State and a 5 year Master Gardener from Utah State University. She will be teaching how to prepare the soil without tilling, using raised beds, and use of natural fertilizers. You will learn how fungi, bacteria, earthworms and micorrhizals affects the garden, about Hugelkultur culture and organic pest control.

Growing Roses in Tooele Valley by Virginia Hooper – One of our returning and favorite presenters, Ginny started her 30 year career in plant design and greenhouse production, working for Utah Roses Inc. in Sandy. She's cared for and potted Floribundas, Mini roses, Hybrid tea roses, Grandifloras and Climbing roses. She enjoys being a member of the Utah Rose Society, Master Gardeners and Landscape designer. Find out which roses bushes are the most fragrant and why Landscape and Carpet roses are all the rage in drought tolerant and low maintenance plant design. Her class will cover all the Spring checklists: potting bare root roses, pruning, mulching, applying fertilizer and reducing the risk of common pests and diseases.

Kitchen Magic Tips and Techniques for Great Food Prep by Jay Cooper Gardening is a joy, especially because you get to eat the results. Join Jay, YouTube's own "DirtFarmerJay" (another returning favorite presenter) for a lively hands on session packed with clever food prep tips and tasty techniques! We'll wrap things up with a warm bowl of homemade tomato soup and a perfectly grilled cheese sandwich. Come hungry for learning—and lunch!

Our Special Guest Speaker will present A Toolkit for Tree Survival and Care, Dr. Miles Becker. Miles is an ISA Certified Arborist with experience as a tree climber, consultant and researcher. He received his PhD in urban ecology at the University of Nevada Reno then worked in the tree industry for 12 years before joining USU Extension. He works with professional arborists, landscapers and homeowners to grow healthy and long lived trees in Utah's tough climates. You'll be introduced to a range of related topics in today's presentation:



The Annual TVGA Onion Order is OPEN!

Are you ready to grow amazing onions this year? Get a great start with quality onion plants - don't bother with sets or seeds!

We're teaming up again with Dixondale Farms - America's largest onion-growing company - to bring Tooele Valley gardeners premium onion starts for just \$9 per bunch (50+ plants!).

Intermediate and Long Day varieties are proven winners here, available in white, yellow, blush, and red varieties, ranging from sweet to storage onions!

Never grown onions before? We've got you covered! Come to TVGA's FREE Onion Growing Class & Exchange on Saturday, March 14th, from 10 to 11:30 AM at Adobe Rock Products, 700 E. Village Blvd., Stansbury Park.

If you need a catalog, you can get one on the front porch of the Cooper residence, located at 984 Ironwood Rd, Erda, or at the USU Tooele Extension, 151 N Main, Tooele, at the upcoming USU Extension Spring Expo on February 28th, or you can preview online at dixondalefarms.com.

To be a part of the TVGA order, DO NOT order from Dixondale Farms directly. Instead, send your order to Jay via email to dirtfarmerjay@gmail.com or text to 435-830-1447.

Payment via Venmo is preferred. Use our account name @tooelevalleygardeningassoc. Onions are \$9 per bunch, and the order deadline is Monday, March 2nd. Orders can be picked up at the March 14th class or after.

If you're not sure what to order, try the samplers that Dixondale Farms offers. You'll get white, yellow, and red varieties in the bunch. They are available in intermediate and long-day varieties.



Onion Growing Class and Exchange on March 14th!



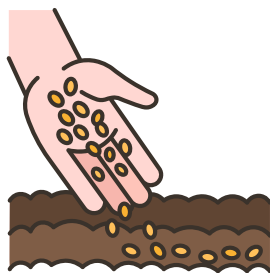
Come to the 3rd annual Onion Growing Class and Exchange. If you've ordered onion plants through our onion group purchase, they will be available for pick up that day.

During this class, you'll learn how onions are sensitive to daylength and that the best onions to grow at our latitude are intermediate and long-day varieties. You gain insight on how onions grow and thrive, and what their water, cultivation, and nutrition needs are from planting the onion plant/start through to the day of harvest!

This class is a combination of live presentation and a web-class taught live by Bruce Frasier, the owner of Dixondale Farms, the largest producer of onion plants in the U.S.

A highlight of the session is the plant exchange right after the presentation. This will let you try different varieties to see which you like best. We'll have some extra onion plants on hand for sale in case you miss the order.

For more information, contact Jay Cooper at dirtfarmerjay@gmail.com.



USU Extension's FIRST Monthly Class !

The first TVGA collaborative class with the USU Extension is coming up!

Seed Starting

Thursday, April 9th

7:00 PM

To be held at the USU Extension Auditorium

151 N. Main St

Tooele, UT

We hope to see you there!

Looking Ahead

USU's Fruit Tree Pruning Demonstration is March 21st!

Learn how to prune fruit trees and berries during this "hands-on" demonstration on March 21st, 2026, from 1 - 3 PM.

The orchard and berry patches are located at:

1894 Blue Peak Drive

in Pine Canyon

Look for the house with the blue roof!



Looking Ahead

The Annual Garden Tour is Coming June 5th and 6th!

Mark your calendar for **Friday and Saturday, June 5–6**, when the **Annual Garden Tour** returns with **12+ beautiful locations** across Grantsville and Stansbury Park.

Now in its 27th year, the Tour showcases a wide variety of garden styles and sizes – from compact spaces to sprawling landscapes, ornamental displays to productive food plots, plus creative hardscape, lifestyle, and specialty gardens. No matter your interest or experience level, you'll leave with ideas you can use at home.

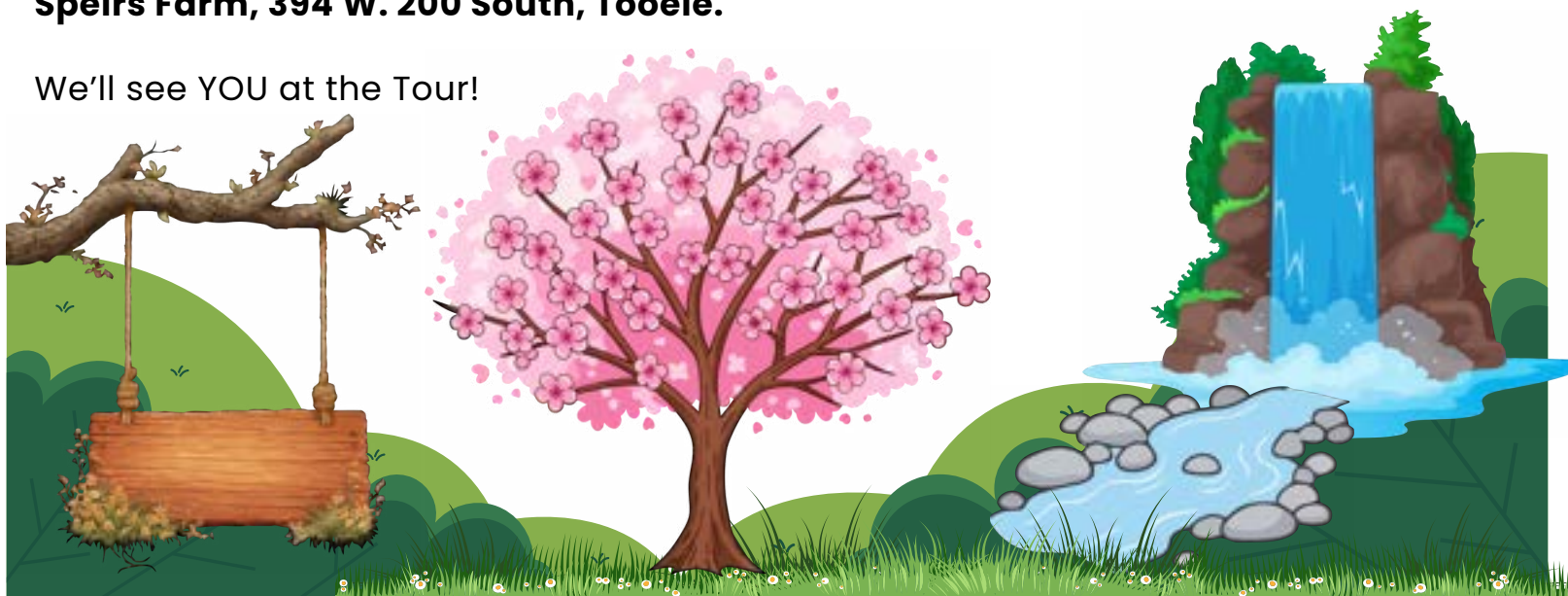
Each \$10 admission includes a full-color **Tour Guide Book** and wristband. The guide provides descriptions of every garden, driving directions, smartphone QR map links, and a master valley map to help you plan your route for the day.

Tickets go on sale Friday, May 22 at:

- Adobe Rock Products – 700 E. Village Blvd., Stansbury Park
- Tooele Valley Nursery – 435 E. Cimmarron Way, Tooele
- Soelberg's – 213 E. Main St., Grantsville
- Soelberg's – 6727 UT-36, Stansbury Park

During the Tour, tickets may also be purchased at **Speirs Farm, 394 W. 200 South, Tooele.**

We'll see YOU at the Tour!



Membership

It's Time to Renew Your TVGA Membership!

A Tooele Valley Gardening Association membership costs just \$25 per year... and it may be the most valuable \$25 you spend all season.

- Access to ALL TVGA gardening workshops & classes
- Admission to the Annual Garden Tour
- Local, real-world gardening advice that actually works in our valley
- A welcoming community of gardeners who help each other succeed

Here's the only catch (and it's a good one!):

We ask each member to contribute 10 volunteer hours during the year.

That might mean helping at the Garden Tour, assisting with an event, joining a service project, helping with social media or newsletters, or pitching in wherever your talents fit. Most members easily complete their hours just by showing up and helping at the events they already enjoy.

TVGA works because it's powered by neighbors – not paid staff.

If you want to learn more, grow more, and be part of something that truly blesses our community... then join TVGA this year and grow something bigger than your garden.

To join, send your contact info (Name, email address, and phone number) to Jay Cooper at dirtfarmerjay@gmail.com. Pay your \$25 membership fee via Venmo (@tooelevalleygardeningassoc.), and we'll send you your membership confirmation and keep you in the know about upcoming events and volunteer opportunities!



BECOME A MEMBER TODAY!

Members of TVGA enjoy the following benefits:

- Nursery tours
- Field trips
- TVGA workshops and classes
- Social events
- Annual Garden Tour
- Group buys of garden plants

Won't YOU consider officially joining TVGA? It's only \$25 to join! To pay the annual fee, scan the Venmo QR code or visit the Venmo website. We hope you'll join us!



venmo

Watch TVGA's Facebook Group Page for information and updates

[Facebook.com/groups/tooele.valley.gardening.association](https://www.facebook.com/groups/tooele.valley.gardening.association)

Volunteers

TVGA – Volunteer Powered – Why We Ask Members to Volunteer 10 Hours Each Year



You may ask: Why does TVGA ask members for 10 hours of volunteer time per year?

Tooele Valley Gardening Association is powered entirely by gardeners helping gardeners – not paid staff. The small 10-hour volunteer commitment is what allows us to keep membership affordable while still offering workshops, service projects, and our Annual Garden Tour. Instead of raising dues, we simply share the work.

To make it easier and more efficient to track volunteer hours, we are working on a new website that includes a volunteer opportunity listing and an hours tracker. Watch for more details soon!

Volunteer hours aren't meant to feel like an obligation. Most members complete their time naturally by helping at events they already attend – assisting with setup, greeting visitors at the Garden Tour, joining a planting project, or helping behind the scenes with newsletters, social media, or committee work with the TVGA Board.

There's a place for every schedule and skill level, whether you prefer hands-on outdoor projects or quieter organizational roles.

In the end, the volunteer time often becomes the most rewarding part – where friendships grow, knowledge gets shared, and the true spirit of TVGA comes alive.

TVGA isn't just something you join. It's something you help build.

*We ♥ our
Volunteers*

Recipe

Carnitas

Tyler Leary



- 1 lg. onion, thick sliced and quartered
- 3 lbs. boneless pork carnitas (Winco always has these available)
- 1 T. chili powder
- 2 t. oregano
- 2 t. cumin
- 2 t. Kosher salt
- ½ t. pepper
- ½ c. Coke (or water w/ 2 T. brown sugar)
- 2 T. lime juice
- 2 t. garlic, minced
- ¼ t. liquid smoke

Combine in a crock pot and cook on low for 7 hours. Before shredding, use a ladle to remove and set aside the majority of the juice. Now shred the meat, leaving some bigger chunks to preserve the texture. Next, spread meat onto a foil-lined cookie sheet and broil in oven 3 ½ minutes until most of the tips are slightly crisped. This step and that touch of liquid smoke will create all the magic of a perfectly smoked meat with the ease of crock pot cooking. Now put the meat back in the crock pot and add a few ladles of juice back into the mix. Serve in sandwiches, as tacos, in a salad, or with nachos.



Featured Supporter

Wells Cutting Edge - Proud TVGA Sponsor & Local Outdoor-Living Specialists



Wells Cutting Edge has been a valued sponsor of the Tooele Valley Gardening Association, supporting our educational programs, garden tours, and community events. Their craftsmanship has also been featured on past Tooele Valley Garden Tours, and TVGA sincerely appreciates their continued support of our organization and the broader gardening community.

Based in Tooele Valley, **Wells Cutting Edge** specializes in landscape installation, irrigation systems, lighting, water features, and full outdoor-living design. Serving Tooele County and surrounding communities, they help homeowners transform everyday yards into functional, attractive outdoor spaces, from sprinkler upgrades and landscape improvements to complete outdoor projects.

The company continues to expand its capabilities and is now a **Certified Aquascape Contractor**, providing professional design and installation of ponds, streams, and natural-style waterfalls. A great example of this work can be seen at **Adobe Rock Products' Landscape Center**, where a multi-section demonstration water feature shows what professionally designed aquatic landscaping can accomplish.

Customer feedback consistently highlights their responsiveness, reliability, and attention to detail, with many homeowners recommending their sprinkler services, seasonal lighting, and ongoing landscape maintenance.

You can reach the Team at Wells Cutting Edge at www.wellscuttingedge.com or 435-830-5270.

Thanks, Wells Cutting Edge, for your support and being a great asset to our community!



Kudos to Our Supporters

THANK YOU TO ALL OUR AMAZING SUPPORTERS!



^{TOOELE}
Transcript Bulletin

